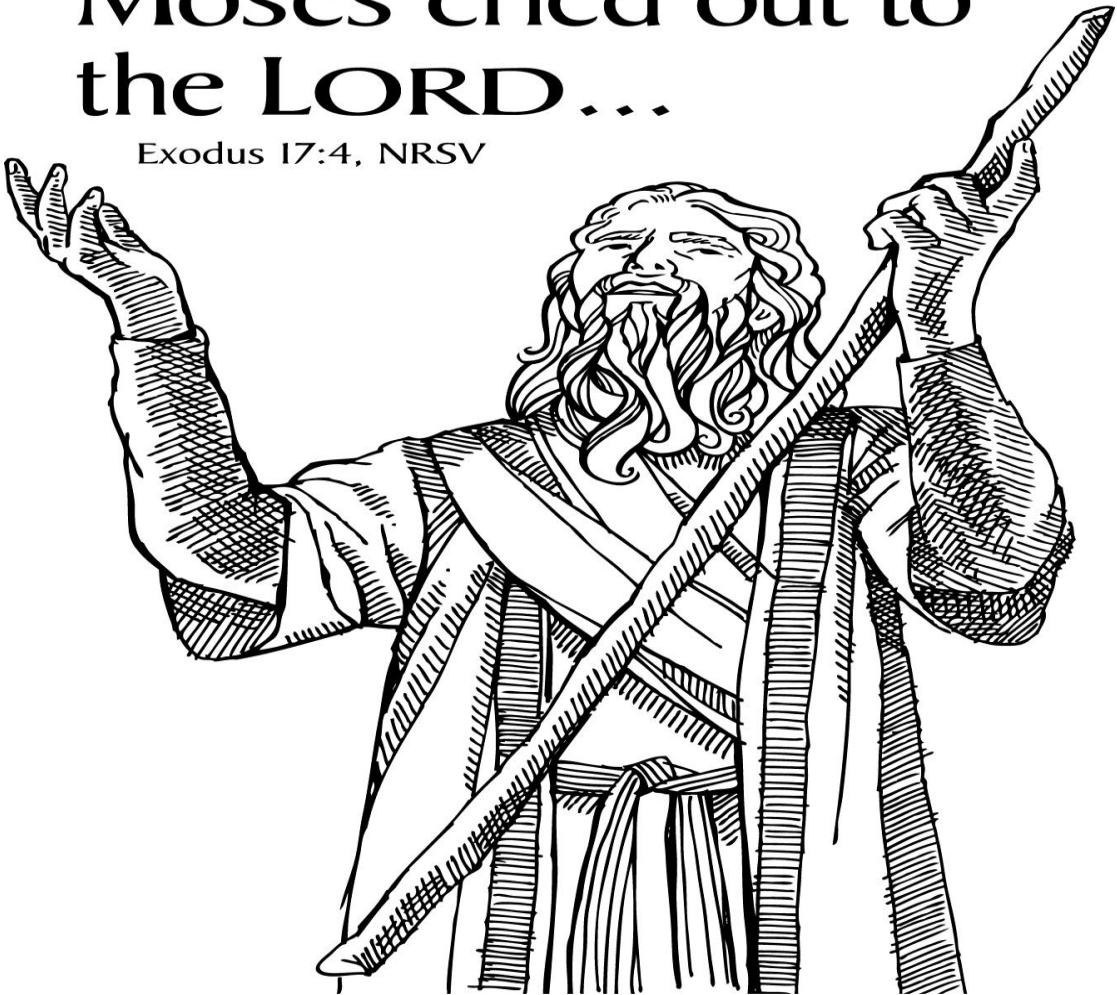


Moses cried out to the LORD...

Exodus 17:4, NRSV



IMMANUEL EV. LUTHERAN CHURCH

390 County Road 2400E

Broadlands, Illinois 61816

loretta@immanuelbroadlands.com

www.immanuelbroadlands.com

Phone: 217-834-3289 Fax: 217-834-3042

March 27, 2011

C: and a great King above all gods.

P: In his hand are the depths of the earth;

C: the heights of the mountains are his also.

P: The sea is his, for he made it,

C: and his hands formed the dry land.

P: Oh come, let us worship and bow down;

C: let us kneel before the LORD, our Maker!

P: For he is our God,

C: and we are the people of his pasture,

P: and the sheep of his hand.

C: Today, if you hear his voice,

P: do not harden your hearts, as at Meribah,

C: as on the day at Massah in the wilderness,

P: when your fathers put me to the test

C: and put me to the proof, though they had seen my work.

Office Hymn

“Come, Thou Fount of Every Blessing”

LSB 686

First Reading

Exodus 17:1-7

L: O Lord, have mercy on us.

C: Thanks be to God.

Epistle Reading

Romans 5:1-8

L: O Lord, have mercy on us.

C: Thanks be to God.

***Gospel Reading**

John 4:5-26

L: O Lord, have mercy on us.

C: Thanks be to God.

***Lent Responsory**

LSB p. 222

Children's Message

Sermon

“Is the Lord With Us Or Not?”

Exodus 17:1-7

***Te Deum**

LSB p. 223-225

Offering

***Kyrie**

LSB p. 227

***Lord's Prayer**

LSB p. 227

***Collects**

LSB p. 227

***Collect of the Day**
C: Amen.

see insert

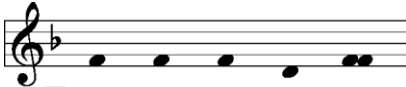
***Additional Collects of Intercession and Thanksgiving**

LSB p. 228

***Collect for Grace**
C: Amen.

LSB p. 228

***Benedicamus**



L Let us bless the Lord.



C Thanks be to God.

***Benediction**

LSB p. 228



C A-men, a-men, a - men.

Closing Hymn *"When I Survey the Wondrous Cross"*

LSB 426

Silent Prayer

Announcements

Postlude

Welcome: The doors of this house of God are open to one and all. Today we praise God as brothers and sisters in Christ. **Guests,** Please sign the guest register in the hallway and/or the yellow card found in the pew rack, drop it in the offering plate or hand it to an usher and please come worship with us again.

SERVING IN GOD'S HOUSE TODAY

Pastor

Rev. John Sharp

Phone # 834-3289-office; -cell 217-493-4632

T.I.M. Missionary

Jon and Julie Muhly

Organist

Mary Ann Rohl

Lector

Chris Kirschner

AV

Jackie Joines

Acolytes

Skylur & Huntur Orwick

GOD'S BLESSING TO THOSE CELEBRATING BIRTHDAYS THIS WEEK...

Today March 27th– Traci Cokley, Austin Payne, Betty Wienke; **29th**– Logan McKee.



Prayers for our Sick and Shut-ins... Wanda Siuts, Dennis & Doris Freeman, Fred & Alice Messman, Deanna Dohme, Judi Struck, Lizbeth Zumkeller, Gisela Mohr, David Bessinger, Ralph & Juanita Schweineke, Mary Richars, Verne Wienke, Aaron Farmer, Frances Mumm.

**Prayer
Requests**

LAST Last Wednesday 59 gathered in God's house. Plate- \$69.10; Home-
WEEK \$175.00; Mission- \$10.00. Last Sunday 136 gathered in God's house. Plate-
\$119.25; Home- \$2524.00: Mission- \$110.00; Car Fund- \$25.00; Building Fund-
\$50.00; Organ Fund- \$124.00. SS attendance/offering-37/\$19.50; ABC
attendance/offering- 28/\$25.00.

THIS WEEK AT IMMANUEL

TODAY

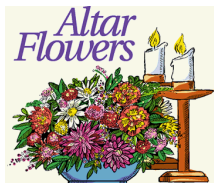
Blood Pressure Screening 8:30 & 10:15am
 Matins Service 9:00am
 SS class 10:15am
 Donut/coffee Fellowship 10:15am
 Special Voters Assembly 10:30am
 6th grade confirmation 11:15am

WEDNESDAY:

Adult Bible Class 9:00am
 Soup/Salad Supper 5:30-6:30pm
 7th & 8th grade confirmation 5:00pm

SUNDAY:

Lenten Service 7:00pm
 G.R.O.W. & Newman Church 7:00am
 Divine Service w/Holy Communion 9:00am
 SS/Adult/Young Adult Bible class 10:15am
 Donut/coffee Fellowship 10:15am
 6th grade confirmation 11:30am



Flowers gracing the altar this morning are given to the glory of God and in memory of the birthday celebration of Irene Cable (March 26th) by Boyd Cable.



Our congregation is in need of about a dozen new hymnals. If you would like to purchase a hymnal in memory or celebration of a loved one, please contact a member of the Board of Worship. **DEADLINE to Order APRIL 3rd.**



The Trustees will hold a spring work day on April 4th starting 8:30 am. Rain date April 5th. If you have cemetery decorations that you want to save, please remove before the clean up day.



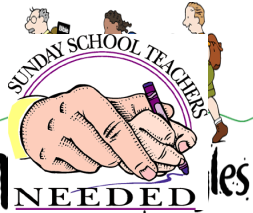
Do you miss the special music in our church? The Board of Worship is searching for a Choir Director. Is this a position you could fill? Do you have a name of someone you think could fill this position? Please contact a member of the Board of Worship. We have a couple of names of people outside our congregation, but want to give the opportunity to a member first.

Hospitality Ministry



COOKIES FOR LENT

There is a sign up sheet on the bulletin board to bring cookies to enjoy with the Lent Meals. We need 6 people to bring 2 dozen cookies each week. The youth will serve them during the meal before service. Please have them to the church no later than 5:30 pm. Any questions please see Beth Rutledge.



The Board of Education is putting together a substitute teacher list for the Sunday school teachers if you are interested in being a substitute teacher please put your name and contact information on the sign up sheet on the bulletin board in the hallway. The official substitute list will be given to all Sunday school teachers.



LCMS Youth Sharing Jesus

Ongoing Ambassadors For Christ (O AFC) will be having an outreach weekend April 1-3 at Immanuel, Altamont, IL. Mature junior high through adults welcome. Witnessing of Jesus love and forgiveness in puppets, song, personal witness, drama, Bible study, door to door survey and prayer. There is no fee for this event and training is provided. Please contact Nathan Ruppert at 217-827-1777 to register for this event. Begins at 7PM on the 1st (no fool'n)

Congregational Meeting



Today we will hold a special voters assembly in the Fellowship Hall to get approval to drill a new well. It will be at 10:30am.



Saturday, April 23rd at 4:00 pm is the Annual Easter Egg Hunt here at the church. All children through 5th grade are invited to attend and hear the Easter story. Donations if individually wrapped candy are needed to make this outreach a success. There is a tote in the library for your donations. Thanks you for your generosity.



For those doing the two year bible reading, the website for the schedule is www.nelsonbibles.com/admin/uploads/pdfs/ChronologicalReadingPlan.pdf. If you have any questions, contact Linda Pierce.



Next Sunday, April 3, 2011 we will hold our first of four "Building Fund" offerings. This money is used for repairs or replacements to the building. Use the "Building Fund" envelopes in the bulletin and include "Building Fund" in the memo box on your check.