

IMMANUEL EV. LUTHERAN CHURCH

390 County Road 2400E
Broadlands, Illinois 61816

loretta@immanuelbroadlands.com

www.immanuelbroadlands.com

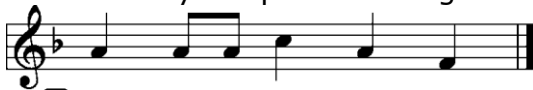
Phone: 217-834-3289

June 24, 2018

*Holy Gospel

Luke 1:57-80

P: The Holy Gospel according to St. Luke, the first chapter.



C Glo - ry to You, O Lord.

P: This is the Gospel of the Lord.



C Praise to You, O Christ.

Children's Message

Sermon Hymn

"O Worship the King"

LSB 804

Sermon

"The End and the Beginning"

*Apostles Creed

LSB p. 159

*Prayer of the Church

P: Lord, in Your mercy, **C: Hear our prayer.**

P:Your Son, Jesus Christ, our Lord. **C: Amen.**

The Peace

Following the prayers, the people may greet one another in the name of the Lord, saying, "Peace be with you," as a sign of reconciliation and of the unity of the Spirit in the bond of peace (Matt. 5:22-24; Eph. 4:1-3).

Offering

*Offertory

LSB p. 159

*Lord's Prayer

LSB p. 162

*Collect

P: Almighty God, grant to Your Church Your Holy Spirit and the wisdom that comes down from above, that Your Word may not

be bound but have free course and be preached to the joy and edifying of Christ's holy people, that in steadfast faith we may serve You and, in the confession of Your name, abide unto the end; through Jesus Christ, our Lord.

C: Amen.

***Benediction**

LSB p. 166



Closing Hymn

"O Christ, Our True and Only Light"

LSB 839

Silent Prayer

Announcements

Postlude

Welcome: The psalmist urges us to sing the Lord's praises and proclaim his deeds to all (see Psalm 9:11). Let us do so! Welcome to worship. **Guests,** Please sign the guest register in the hallway and/or the yellow card found in the pew rack, drop it in the offering plate or hand it to an usher and please come worship with us again.

Like us on Facebook @ <http://www.facebook.com/immanuellutheranbroadlands>

SERVING IN GOD'S HOUSE TODAY

Pastor

Phone # 834-3289-office; -cell 217-493-4632

Rev. John Sharp

Organist

Sandra Chesnut

Lector

Steve Smith

AV

Jim McKee

Video

Tiffany Paul

GOD'S BLESSING TO THOSE CELEBRATING BIRTHDAYS THIS WEEK...

Today, June 24th - Janet Franzen, Christy Sharp; **27th** Jacob Naese, Hillary Wienke; **28th**- Rick Snider.



Prayers Prayers for our Sick and Shut-ins... Darrell Struck, Helen S. Luth, Janet Franzen, Gerhardt Mohr, Shirley Taylor, John Holmes, Don Clem, Dennis Freeman, Deanna Dohme.

Last Sunday 150 gathered in God's house. Plate- \$585.46; Home- \$3922.00; Car Fund- \$25.00; Marion Wienke Memorial- \$50.00. SS attendance/offering- 18/\$9.39*; ABC attendance/offering- 29/\$12.00.

THIS WEEK AT IMMANUEL

- TODAY:** Blood Pressure screening 8:30 & 10:15am
- Divine Service 9:00am
- SS/Adult/Young Adult Bible Class.....10:15am
- Coffee/Donut fellowship.....10:15am
- 7th & 8th grade confirmation..... 6:30pm
- office closed
- FRIDAY:** office closed
- SUNDAY:** G.R.O.W @ Newman Christian Church 7:00am
- Divine Service Holy Baptism & w/communion 9:00am

The altar flowers are placed by the family of Ralph Schweineke in memory of his birthday on June 19th and for Aaron Farmer's birthday on June 27th.



WHILE THE PASTOR'S AWAY...

Pastor Sharp, Christy and Nathan will be on vacation through Tuesday, June 26th. Sam Smith will take care of the service today. For an emergency or assistance contact the office, Pastor Ehlers at 356-3525 or Chris Kirschner, Keith Rohl, Ron Bergmeier or Paul Freebairn.



Next Sunday, July 1st we will hold our second of four special offerings for the "Building Fund". This money is used for the repairs and maintenance of the church. Use the "Building Fund" envelope in the bulletin. Put "Building Fund" in the memo line with your number.



Listen to Worldwide KFUE.org, your radio station for practical Lutheran talk, daily Bible and Confession studies, daily worship opportunities, and current issues from a Lutheran worldview. Programs are archived at KFUE.org for 24/7 on-demand listening. You can also find our programming wherever you get your podcasts! Have a question or comment? Find us at @KFUEradio on Facebook, Twitter, and Instagram. **This week on KFUE.org**, we'll hear about the Presentation of the Augsburg Confession on The Coffee Hour (9:00 a.m.) and in Daily Chapel (10:00 a.m.) on 6/25, jump into the early chapters of the book of Romans on Thy Strong Word (weekdays at 11:00 a.m.), and hear Rev. Sean Smith and his crew of entertaining guests on Concord Matters discuss our Lutheran faith (6/26 at 2:00 p.m.). Find programs archived at kfue.org!