

FOLLOWING JESUS

IMMANUEL EV. LUTHERAN CHURCH

390 County Road 2400E
Broadlands, Illinois 61816

loretta@immanuelbroadlands.com

www.immanuelbroadlands.com

Phone: 217-834-3289

February 25, 2018

SECOND SUNDAY IN EASTER

February 25, 2018

***Please stand as you are able**

Prelude

Welcome

Pastor Sharp

Opening Hymn

"Come to Calvary's Holy Mountain"

LSB 435

***Confession and Absolution**

LSB p. 151

***Service of the Word**

LSB p. 152

***Introit**

see insert

***Kyrie**

LSB p. 152

***Salutation and Collect of the Day**

LSB p. 156

Old Testament Reading

Genesis 32:22-32

P: This is the Word of the Lord.

C: Thanks be to God.

Gradual

sung by choir

Epistle Reading

1 Thessalonians 4:1-7

L: This is the Word of the Lord.

C: Thanks be to God.

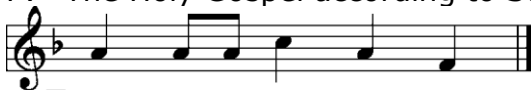
***Verse for Lent**

LSB p. 157

***Holy Gospel**

Matthew 15:21-28

P: The Holy Gospel according to St. Matthew, the fifteenth chapter.



G Glo - ry to You, **O** Lord.

P: This is the Gospel of the Lord.



C Praise to You, O Christ.

Children's Message

Sermon Hymn

"Lamb of God, Pure and Holy"

LSB 434

Sermon

"Holiness"

1 Thessalonians 4:1-7

*Apostles Creed

LSB p. 159

*Prayer of the Church

P: Lord, in Your mercy, **C: Hear our prayer.**

P:Your Son, Jesus Christ, our Lord. **C: Amen.**

The Peace

Following the prayers, the people may greet one another in the name of the Lord, saying, "Peace be with you," as a sign of reconciliation and of the unity of the Spirit in the bond of peace (Matt. 5:22-24; Eph. 4:1-3).

Offering

*Offertory

LSB p. 159

*Lord's Prayer

LSB p. 162

*Collect

P: Blessed Lord, You have caused all Holy Scriptures to be written for our learning. Grant that we may so hear them, read, mark, learn and inwardly digest them that, by patience and comfort of Your holy Word, we may embrace and ever hold fast the blessed hope of everlasting life; through Jesus Christ, our Lord.

C: Amen.

*Benediction

LSB p. 166



♩ A-men, a-men, a - men.

Closing Hymn

"Go to Dark Gethsemane"

LSB 436

Silent Prayer

Announcements

Postlude

Welcome: A warm welcome to all as we gather for worship, Christian education and fellowship. Please greet one another with the Lord's peace! **Guests,** Please sign the guest register in the hallway and/or the yellow card found in the pew rack, drop it in the offering plate or hand it to an usher and please come worship with us again.

Like us on Facebook @ <http://www.facebook.com/immanuellutheranbroadlands>

SERVING IN GOD'S HOUSE TODAY

Pastor

Rev. John Sharp

Phone # 834-3289-office; -cell 217-493-4632

Organist

Genevieve Biggs

Lector

Mike Bergmeier

AV

Stacy Luth

Video

Tiffany Paul

Acolytes

Mary & Elizabeth Boyer

T.I.M. Missionary

Rev. Micah and Deaconess Dorothy Glenn

GOD'S BLESSING TO THOSE CELEBRATING BIRTHDAYS THIS WEEK...

Today, February 25th - Sam Smith; **26th** - Wanda Siuts, Michael Pollock;

27th - Courtney Luth; **28th** - Jim Rohl; **March 1st** - Ann Wright; **3rd** - James

Wienke.



**Prayer
Requests**

Prayers for our Sick and Shut-ins... Janet Franzen, Marion Wienke, Shirley Taylor, John Holmes, Don Clem, Dennis Freeman, Deanna Dohme.

Last Wednesday 99 gathered in God's house. Plate- \$693.54
 Last Sunday 158 gathered in God's house. Plate- \$297.25; Home- \$2330.00. SS attendance/offering- 27/\$13.50; ABC attendance/offering- 47/\$31.00.

THIS WEEK AT IMMANUEL

TODAY: Blood Pressure screening 8:30 & 10:15am
 Divine Service 9:00am
 SS/Adult/Young Adult Bible Class10:15am
 Coffee/Donut fellowship10:15am
 Rev. Matthew Montgomery 's installation @ Saint Paul, Sadorus
 3:00pm

MONDAY: Choir 7:00pm

WEDNESDAY: Adult Bible class 9:00am
 7th & 8th grade confirmation 5:30pm
 Soup/salad supper 5:30-6:30pm
 Lenten service 7:00pm

SUNDAY: G.R.O.W. @ Immanuel 7:00am
 Divine Service w. communion 9:00am
 SS/Adult/Young Adult Bible Class10:15am
 Coffee/Donut fellowship10:15am
 6th grade confirmation 3:00pm

The Second Lenten Banner



This banner displays wheat, which is made into bread, and grapes, which are made into wine. They are the simple earthly means which together with God's Word convey to us His body and blood. Each one of us must take food into the mouth and swallow and digest it in order to receive nourishment. The heavenly meal the Lord so graciously offers is personal also. He recognizes each of us personally as His own dear child cleansed from sin by His blood, and each of us receives Christ personally into his or her own heart.



Lenten daily devotionals are available in the narthex or from a usher.



The theme for Lent services this year is the Passion of Our Lord according to Saint Mark. We will consider different sections of Mark's account of the events leading up to and culminating in the death of our Lord, Mark 14:12-15:47. During the Lent services the Passion Narrative will also be read as usual. The Passion Narrative is based on all four Gospels. It will be important to pay attention then to which parts and events of the Passion of Our Lord Mark chooses to record and emphasize as opposed to the other Gospels.



The youth group will be serving soup/salad dinners for lent. They are looking for cookies for dinner each night. If you can provide cookies, sign up on the sheet on the bulletin board.

Listen to Worldwide KFUE.org, your radio station for practical Lutheran talk, daily Bible and Confession studies, daily worship opportunities, and current issues from a Lutheran worldview. Programs are archived at KFUE.org for 24/7 on-demand listening. You can also find our programming wherever you get your podcasts! Have a question or comment? Find us at @KFUEradio on Facebook, Twitter, and Instagram.



his week on KFUE.org, we continue our observance of the Lenten season with Live Midweek Worship Service broadcast from Peace Lutheran Church in St. Louis (2/28 at 11:00 a.m), learn more of our Lutheran confession of faith in the Apology to the Augsburg Confession on Concord Matters (2/27 at 2:00 p.m), and dig deeper into God's Word in the Gospel of Mark on Sharper Iron (weekdays at 8:00 a.m) and the book of 2 Kings on Thy Strong Word (weekdays at 11:00 a.m). Find these programs on demand at kfue.org.—



Next Sunday, March 4th, we will hold our first of four "Car Fund" offering. This is used for repairs and maintenance for the car Pastor uses. Use the "Love" envelope and put "Car Fund" in the memo line with your number.



Lenten Worship Schedule

Lenten Schedule

Wednesday Lenten services

February 28, March 7, 14, 21

soup-salad supper 5:30- 6:30pm

service 7:00pm

March 25- Palm Sunday 9:00am service

March 29- Maundy Thursday

soup/salad supper 5:30-6:30pm

service 7:00pm

March 30- Good Friday service 7:00pm

March 31- Easter Egg Hunt 4:00pm

April 1- 7:30am Easter service followed by breakfast served by Men's Club