

**Worship
the Lord
your God
and serve
him only.**

Luke 4:8, NIV

IMMANUEL EV. LUTHERAN CHURCH

390 County Road 2400E

Broadlands, Illinois 61816

loretta@immanuelbroadlands.com

www.immanuelbroadlands.com

Phone: 217-834-3289

February 14, 2016

FIRST SUNDAY IN LENT

February 14, 2016

***Please stand as you are able**

Prelude

Welcome

Pastor Sharp

Opening Hymn *"O Lord, throughout These Fort Days"* *LSB 418*

***Confession and Absolution** LSB p. 151

***Service of the Word** LSB p. 152

***Introit** see insert

***Kyrie** LSB p. 152

***Salutation and Collect of the Day** LSB p. 156

First Reading Deuteronomy 26:1-11

L: This is the Word of the Lord.

C: Thanks be to God.

Gradual *Heb. 12:2*

P: [O come, let us fix our eyes on] Jesus,

C: the founder and perfecter of our faith,

P: who for the joy that was set before him endured the cross,
despising the shame,

C: and is seated at the right hand of the throne of God.

Epistle Reading *Romans 10:8b-13*

L: This is the Word of the Lord.

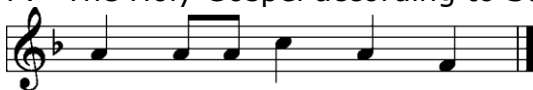
C: Thanks be to God.

*** Verse for Lent** LSB p. 157

*Holy Gospel

Luke 4:1-13

P: The Holy Gospel according to St. Luke, the fourth chapter.



C Glo - ry to You, O Lord.

P: This is the Gospel of the Lord.



C Praise to You, O Christ.

Children's Message

Sermon Hymn

"Christ, the Life of All the Living"

LSB 420

Sermon

"Nothing to Prove"

Luke 4:1-13

*Apostles Creed

LSB p. 159

*Prayer of the Church

P: Lord, in Your mercy, **C: Hear our prayer.**

P:Your Son, Jesus Christ, our Lord. **C: Amen.**

The Peace

Following the prayers, the people may greet one another in the name of the Lord, saying, "Peace be with you," as a sign of reconciliation and of the unity of the Spirit in the bond of peace (Matt. 5:22-24; Eph. 4:1-3).

Offering

*Offertory

LSB p. 159

*Lord's Prayer

LSB p. 162

*Collect

P: Blessed Lord, You have caused all Holy Scriptures to be written for our learning. Grant that we may so hear them, read, mark, learn and inwardly digest them that, by patience and comfort of Your holy Word, we may embrace and ever hold fast the blessed hope of everlasting

life; through Jesus Christ, our Lord.

C: Amen.

***Benediction**

LSB p. 166



C A-men, a-men, a - men.

Closing Hymn

"Jesus, Grant That Balm and Healing"

LSB 421

Silent Prayer

Announcements

Postlude

Welcome: We extend our welcome and Christ's love to all who gather for worship today. We're glad you're here. **Guests,** Please sign the guest register in the hallway and/or the yellow card found in the pew rack, drop it in the offering plate or hand it to an usher and please come worship with us again.

Like us on Facebook @ <http://www.facebook.com/immanuellutheranbroadlands>

SERVING IN GOD'S HOUSE TODAY

Pastor

Rev. John Sharp

Phone # 834-3289-office; -cell 217-493-4632

T.I.M. Missionary

Deaconess Gail Ludvigson

Organist

Nancy Reed

Lector

Sam Smith

AV

Jim McKee

Acolytes

Olaf Schwink & Lynnae Struck

GOD'S BLESSING TO THOSE CELEBRATING BIRTHDAYS THIS WEEK...

Today, February 14th - Terry Brewer; **15th** - Brian Taylor; **16th** Brent

Hockett, Cameron Cokley, Jonathan Goetting; **17th**- Frank Beck, Lois Beck;

20th- Susan McKee.



Prayers for our Sick and Shut-ins... Margo Hockett, Mary Wienke, Don Clem, Dolores Hageman, Anya Knecht, Dennis Freeman, Deanna Dohme, Lizbeth Zumkeller.

Prayer Requests

LAST Last Sunday 173 gathered in God's house. Plate- \$255.45; **SUNDAY:** Home- \$3905.00; Mission Fund- \$55.00; Cap. Impr.- \$50.00; J. Schweineke memorial- \$25.00; Lutheran Hour- \$80.00. SS attendance/offering- 30/\$18.25; ABC attendance/offering- 45/\$35.00.

THIS WEEK AT IMMANUEL

| | | |
|-------------------|--|-------------|
| TODAY: | Divine Service | 9:00am |
| | SS/Adult/ Young Adult Bible Class..... | 10:15am |
| | Coffee/Donut fellowship..... | 10:15am |
| MON.-FRI.: | office closed | |
| MONDAY: | Knitting group | 1:30pm |
| TUESDAY: | Choir..... | 6:00pm |
| | Board of Lay Ministry..... | 7:00pm |
| WEDNESDAY: | Adult Bible Class | 9:00am |
| | 6th grade confirmation | 4:00pm |
| | 7th & 8th grade confirmation..... | 5:30pm |
| | Soup/salad dinner..... | 5:30-6:30pm |
| | Lenten Service..... | 7:00pm |
| SATURDAY: | Confession study | 7:00am |
| SUNDAY: | Divine Service w/Baptism..... | 9:00am |
| | SS/Adult/Young Adult Bible Class..... | 10:15am |
| | Coffee/Donut fellowship..... | 10:15am |



LENTEN SERVICES on your Lutheran Radio Station Worldwide

KFUO.org. Join us every Wednesday from 11am-Noon for special Lenten service broadcasts during this holy season of prayerful and penitential reflection. Archived at **KFUO.org**. Follow us on **Facebook.com/KFUOradio**.

Just a reminder that the office will be closed all next week. If you need assistance, contact pastor or one of the board of Lay Ministry. If it will wait until the 22nd, leave a message and I will get back with you.

Loretta





LENTEN BANNERS (On the south Sanctuary wall)

Lenten banners will take us this Lenten Season on the pathway of our Lord's passion. The first Lenten Banner depicts Jesus in Jerusalem. The color purple symbolizes royalty, that Jesus is King of all Kings; the color violet means the "pathway" on the banner, and is also the seasonal color for Lent. It is a call to repentance. The palm branch reminds us of the paradox of joyous shouts of "Hosanna" from the crowd as Jesus entered Jerusalem, and the shouts of "Crucify Him" a few days later. Because our flesh is weak, we succumb to sin for which our Lord laid down his life. It is ever important that we "follow the violet pathway" through our life.



The "Cookie" signup sheet is on the bulletin for Lent dinners. Please pick some dates that you can bring cookies. Thanks from the Youth.

The Wednesday morning Adult Bible Class has completed their study of the book of Leviticus! (And the Lord didn't return first!) The Wednesday morning group has chosen to begin a study of the book of Hebrews beginning Wednesday, February 17. If you have wanted to join a Bible study or specifically the Wednesday morning group, now is an excellent time to do so as they begin a new topic. They meet at 9am every Wednesday (with a few exceptions) until the end of May.

