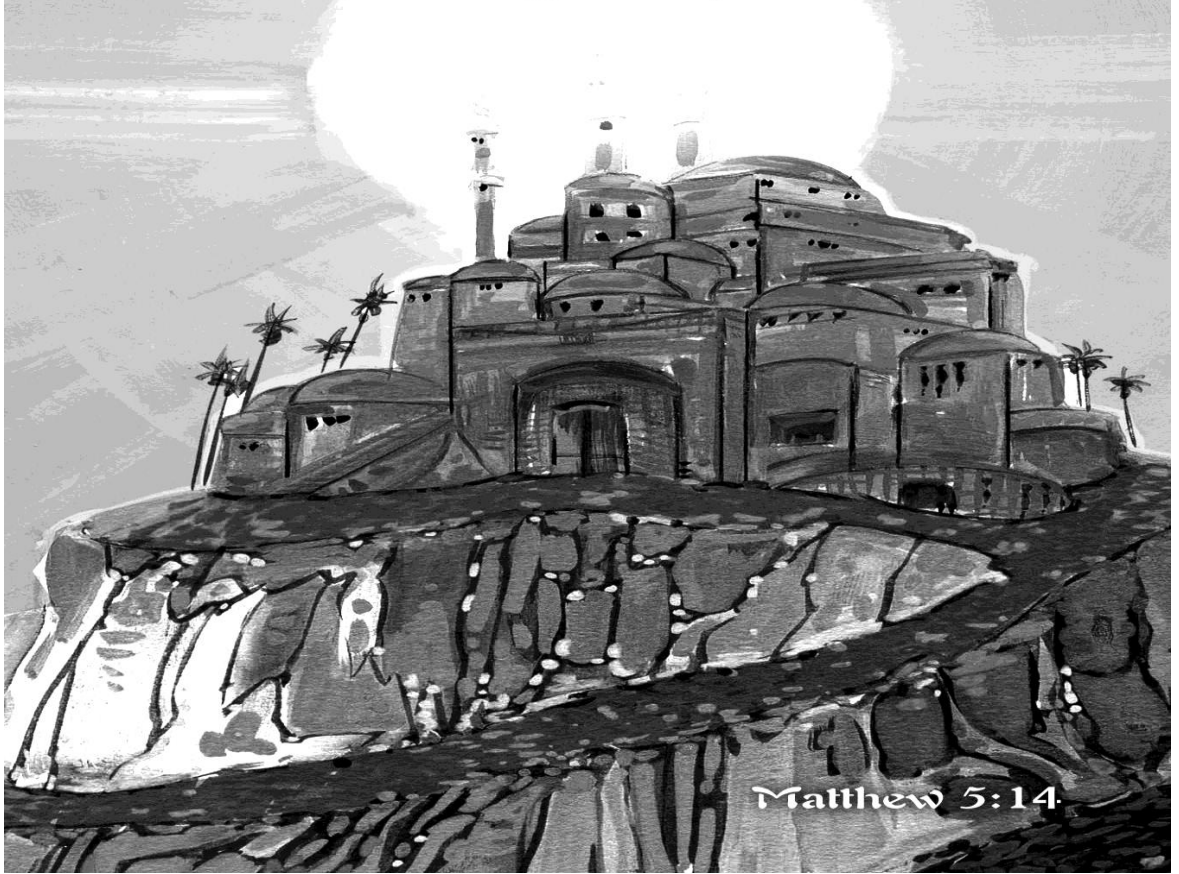


You are the light of the world.



IMMANUEL EV. LUTHERAN CHURCH

390 County Road 2400E

Broadlands, Illinois 61816

loretta@immanuelbroadlands.com

www.immanuelbroadlands.com

Phone: 217-834-3289

February 5 , 2017

FIFTH SUNDAY AFTER THE EPIPHANY

February 5, 2017

***Please stand as you are able**

Prelude

Welcome

Pastor Sharp

Opening Hymn

"Hail to the Lord's Anointed"

LSB 398

***Confession and Absolution**

LSB p. 151

***Service of the Word**

LSB p. 152

***Introit**

see insert

***Kyrie**

LSB p. 152

***This is the Feast**

LSB p. 155

***Salutation and Collect of the Day**

LSB p. 156

Old Testament Reading

Isaiah 58:3-9a

L: This is the Word of the Lord.

C: Thanks be to God.

Gradual

Ps. 117:1-2a; 96:8

P: Praise the LORD, all nations!

C: Extol him, all peoples!

P: For great is his steadfast love toward us,

C: and the faithfulness of the LORD endures forever.

P: Ascribe to the LORD the glory due his name;

C: bring an offering, and come into his courts!

Epistle Reading

1 Corinthians 2:1-12

L: This is the Word of the Lord.

C: Thanks be to God.

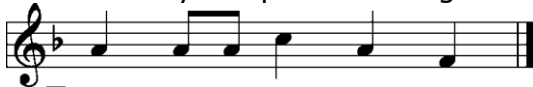
***Alleluia and Verse**

LSB p. 156

***Holy Gospel**

Matthew 5:13-20

P: The Holy Gospel according to St. Matthew, the fifth chapter.



C Glo - ry to You, O Lord.

P: This is the Gospel of the Lord.



C Praise to You, O Christ.

Sermon Hymn

"Gracious God, You Send Great Blessings"

LSB 782

(stand for final stanza)

Sermon

"Salt, Light and the City"

Matthew 5:13-20

***Nicene Creed**

LSB p. 158

Installation of Congregation Officers

***Prayer of the Church**

P: Lord, in Your mercy, **C: Hear our prayer.**

P:Your Son, Jesus Christ, our Lord. **C: Amen.**

Following the prayers, the people may greet one another in the name of the Lord, saying, "Peace be with you," as a sign of reconciliation and of the unity of the Spirit in the bond of peace (Matt. 5:22-24; Eph. 4:1-3).

Offering

***Offertory**

LSB p. 159

***Service of the Sacrament**

LSB p. 160ff

Hymns During Distribution

"Within the Father's House"

LSB 410

(stand for final stanza)

"Arise and Shine in Splendor"

LSB 396

"Brightest and Best of the Stars of the Morning"

LSB 400

"Come, Join in Cana's Feast"

LSB 408

(stand for final stanza)

***Nunc Dimittis**

LSB p. 165

***Post Communion Collect**

LSB p. 166

***Benediction**

LSB p. 166



■ A-men, a-men, a - men.

***Closing Hymn**

"From God the Father, Virgin Born"

LSB 401

(stand for final stanza)

Silent Prayer

Announcements

Postlude

Welcome: Sisters and brothers in Christ, welcome to worship! May your time in the Lord be rich and blessed. **Guests,** Please sign the guest register in the hallway and/or the yellow card found in the pew rack, drop it in the offering plate or hand it to an usher and please come worship with us again.

**Like us on Facebook @ <http://www.facebook.com/immanuelutheranbroadlands>
& Follow us on twitter: @IBroadlands**

SERVING IN GOD'S HOUSE TODAY

Pastor

Rev. John Sharp

Phone # 834-3289-office; -cell 217-493-4632

T.I.M. Missionary

Deaconess Gail Ludvigson

Organist

Genevieve Biggs

Lector
AV
Acolytes

Mike Bergmeier
Stacy Luth
Brianna Struck & Avian Gerdes



birthdays **GOD'S BLESSING TO THOSE CELEBRATING**

BIRTHDAYS THIS WEEK... February 6th- Zachary Renfrow, Christian Paul;
8th- Rolane Renfrow, Patrick Sanstrom; **9th**- Angela Smith, John Sharp, Mason
Renfrow; **10th**- Ainsley Maher.



Prayer Requests **Prayers for our Sick and Shut-ins...** Don Clem, Dolores Hageman, Dennis
Freeman, Deanna Dohme, John Holmes.

Last Sunday 178 gathered in God's house. Plate- \$291.45; Home- \$2545.00;
Mission- \$10.00; Lutheran Witness- \$30.00. SS attendance/offering- 350/\$26.00.
ABC attendance/offering- 0/\$.00.

THIS WEEK AT IMMANUEL

TODAY:	G.R.O.W. @ Newman Christian Church	7:00am
	Divine Service	9:00am
	SS/Adult/Young Adult Bible Class	10:15am
	Coffee/Donut fellowship	10:15am
	Pastor @ Newman HC	2:00pm
MON.-FRI.:	office closed	
MONDAY:	Sewing Day	9:00am
TUESDAY:	Choir	6:00pm
WEDNESDAY:	Adult Bible Class	9:00am
	6th grade confirmation	5:00pm
	7th & 8th grade confirmation	6:30pm
SATURDAY:	Men's Bible Breakfast	7:30am
SUNDAY:	Blood Pressure screening	8:30 & 10:15am
	Divine Service	9:00am
	SS/Adult/ Young Adult Bible Class	10:15am
	Coffee/Donut fellowship	10:15am



The donut sign up sheet for January, February, March and April are on the
bulletin board. Please pick a day that you can pick them up. They are
available at Rick's Country Market in Villa Grove. You can pay for them and

turn it in as a contribution or charge them to the church. Thanks

Listen to Worldwide KFUE.org, your radio station for news, talk, and sacred music with a cross-focused, Christ-centered Lutheran worldview. All programs are archived at KFUE.org for 24/7 on-demand listening. **Have a question or comment? Find us on Facebook.com/KFUEradio, on Twitter @KFUEradio, or Instagram @kfue.radio.**

This week on KFUE.org:

Mon, Feb 6 — Cross Defense @ 2:00 p.m.: Verily, a Precious Effect: Religion, Part V

Tues, Feb 7 — His Time @ 8:40 a.m.: Dr. David Schmitt on "Preach the Word" pastoral continuing education.

Wed, Feb 8 — Faith & Family @ 10:00 a.m.: Results of the Youth Poll at the 2016 National Youth Gathering

Thurs, Feb 9 — Faith & Family @ 10:00 a.m.: Peggy Kuethe from CPH talks about the newest Arch Books!

Fri, Feb 10 — Thy Strong Word @ 11:00 a.m.: 1 Corinthians 6 with guest Rev. Michael Walther

Today we will hold a special offering for the "Lutheran Hour Radio". Please use the "Love" envelope and put "Lutheran Hour" in the memo part of your check with your number.

The contribution statements are available for pickup in the library. Please pick up your copy to save postage. If you have any corrections, see Paul Freebairn. Thanks for your contributions.

In order to save on heating and cooling we ask that we try to keep all doors closed. The sanctuary doors are usually left open on Sunday and heat is running to try and heat the hallways. Thanks for your help in trying to keep cost down.

